

# Safer York Community Safety Overview and Scrutiny, Performance Report

October 2010

## PERFORMANCE REPORT ON COMMUNITY SAFETY PLAN 2011-14

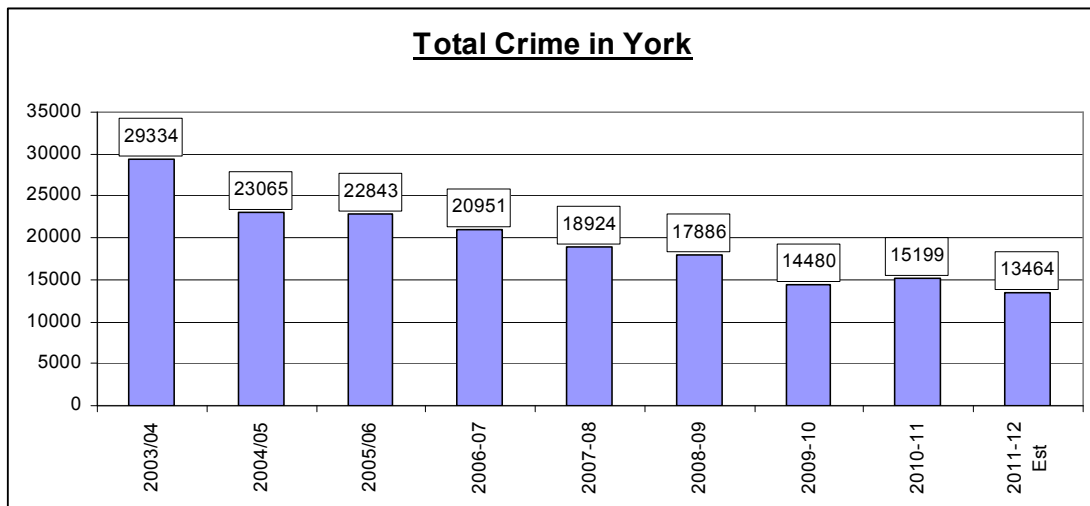
### 1. Introduction and Overview

1.1. Data and/or update information on progress is not held by the Safer York Partnership support team for all of the indicators contained within the plan.

1.2. This report will now take the form of an exception report whereby only items which are underperforming are reported upon. The exception report will be presented in a form in line with the Community Safety Plan 2011-14 which has the following priorities;

- Acquisitive Crime
- Anti-Social Behaviour
- Violent Crime
- Business Crime
- Re-offending Information
- Other Indicators

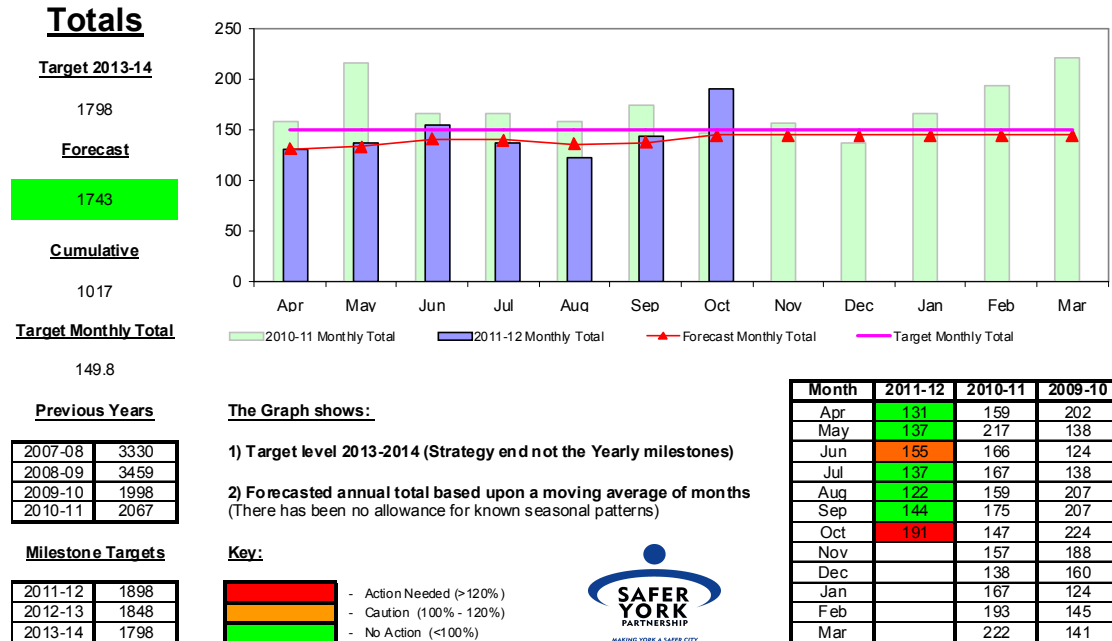
1.3. Total crime in York is predicted to be around 1750 crimes lower in 2011-12 than 2010-11. If achieved this would represent a 54% decrease in crime in the city since 2003/04 in overall crime, with decreases achieved every year, except 2010/11, when there was a small rise on the previous year.



1.4. The only crime performance targets, where there was not a reduction in crime within the last strategy were; NI 20 Assault without Injury, NI 29 Gun crime and Aggravated Vehicle Taking which saw rises of 172 crimes (17%), 5 crimes (250%) and 1 crime (7%) respectively.

## 2. Acquisitive Crime

### York - NI 16 - Serious Acquisitive Crime



2.1. Acquisitive crime is on target for the 2011-12 milestones and is expected to be around 300 crimes less than last year. October has seen the highest month in 2011/12 for serious acquisitive crime and this is due to the level of theft from a vehicle in October.

2.2. The majority of auto-crimes are occurring to vehicles parked on-street. Locations that have historically seen high levels of auto-crime such as industrial estates, car parks, hotels and other business premises have suffered low levels of auto-crime since the start of the financial year.

2.3. There is no single type of property that has been targeted in theft from vehicle. Vehicles in York have been broken in to for amongst many things, sports equipment, sat-navs, money and documents, clothing and any other property left on show. There have been a small number of cases of theft of vehicle parts for scrap (catalytic converters), and a number of individuals have been arrested for this over the last fortnight.

2.4. All ward areas of York are experiencing predicted levels of other types of acquisitive crime.

2.5. York is currently in 5<sup>th</sup> place within its IQUANTA family for Serious Acquisitive crime, and has seen continual monthly improvement since December when York sat in 12<sup>th</sup> position.

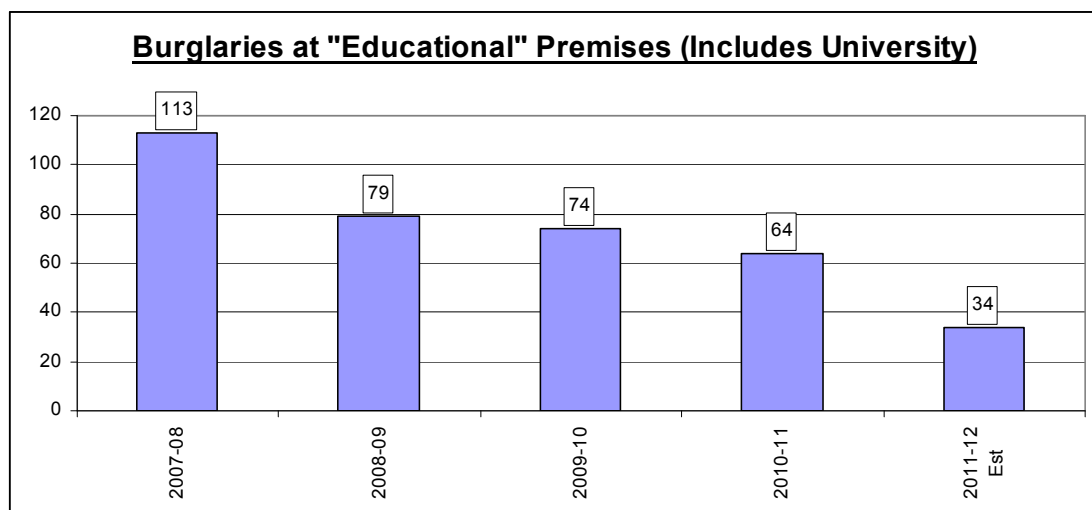
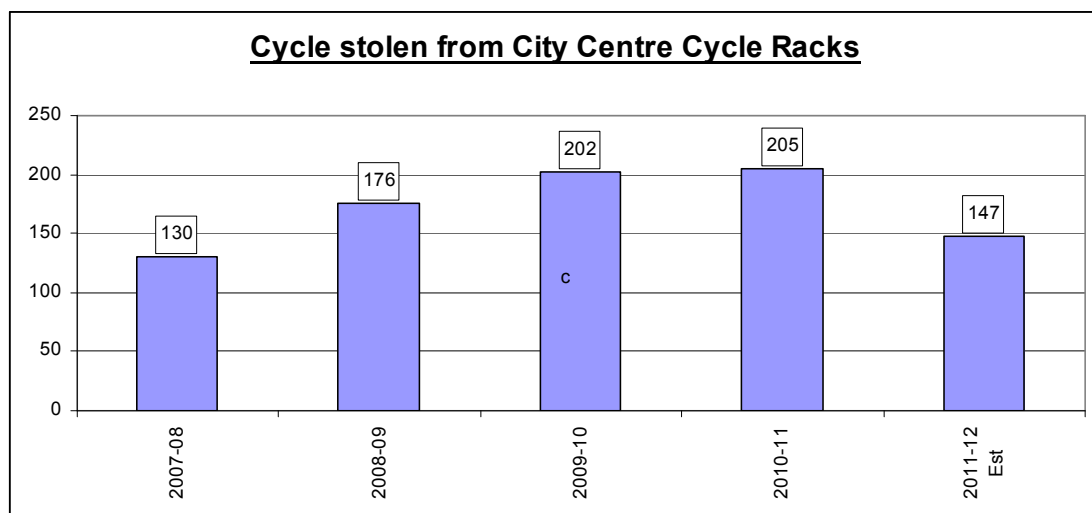
2.6. All indicators are currently on target except for Burglary of a Non Dwelling which has had higher than expected levels in the first three months of the year but is still predicted to have around 175 crimes less than last year.

2.7. Cycles and power tools are still the most targeted property type in burglaries from sheds and garages.

2.8. Levels of cycle theft this year have been significantly lower than last year. York is predicted to have around 400 less cases of theft of a pedal cycle than last year.

2.9. York is still showing significantly lower rates of cycle crime than other large cycling cities (Oxford and Cambridge have 4 times the rate per 1000 population of cycle theft).

2.10. Levels of acquisitive crime at business premises and industrial estates, schools, other educational establishments, city-centre cycle racks, council car parks and allotments have been low during 2011/12.



2.11. Last December and January saw the lowest monthly acquisitive crime figures for crime in York due to the snow.

### 3. Anti-Social Behaviour

**York - NYP Recorded ASB Calls for Service**

#### Totals

**Target 2013-14**

12361

**Forecast**

13939

**Cumulative**

8131

**Target Monthly Total**

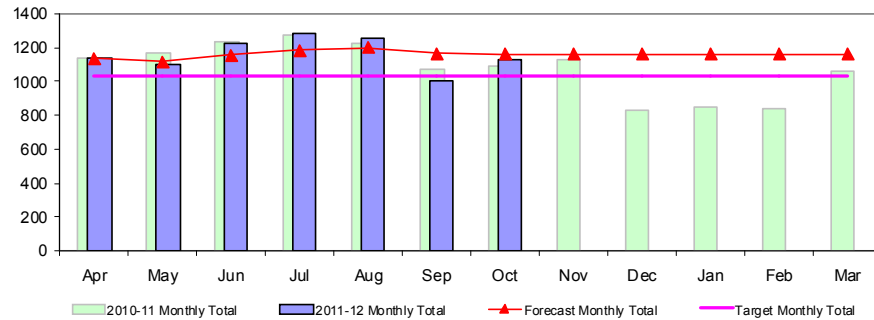
1030.1

**Previous Years**

|         |       |
|---------|-------|
| 2007-08 | 12827 |
| 2008-09 | 12847 |
| 2009-10 | 13012 |
| 2010-11 | 12927 |

**Milestone Targets**

|         |       |
|---------|-------|
| 2011-12 | 12667 |
| 2012-13 | 12524 |
| 2013-14 | 12361 |



**The Graph shows:**

- 1) Target level 2013-2014 (Strategy end not the Yearly milestones)
- 2) Forecasted annual total based upon a moving average of months (There has been no allowance for known seasonal patterns)

**Key:**

|  |                         |
|--|-------------------------|
|  | - Action Needed (>120%) |
|  | - Caution (100% - 120%) |
|  | - No Action (<100%)     |



| Month | 2011-12 | 2010-11 | 2009-10 |
|-------|---------|---------|---------|
| Apr   | 1139    | 1142    | 1158    |
| May   | 1097    | 1170    | 1123    |
| Jun   | 1225    | 1238    | 1150    |
| Jul   | 1285    | 1270    | 1235    |
| Aug   | 1251    | 1229    | 1320    |
| Sep   | 1001    | 1069    | 1046    |
| Oct   | 1133    | 1094    | 1164    |
| Nov   |         | 1125    | 1015    |
| Dec   |         | 833     | 966     |
| Jan   |         | 854     | 939     |
| Feb   |         | 843     | 836     |
| Mar   |         | 1060    | 1060    |

3.1. Levels of anti-social behaviour calls for service recorded by North Yorkshire Police are predicted to rise by 1000 cases (8%) by the end of the financial year.

3.2. From April 2011, all new police anti-social behaviour incidents have been categorised differently. ASB is now classified by the type of harm they involve, from personal (impacts an individual), nuisance (impacts a community) and environmental. As such, comparing specific types of ASB is difficult.

3.3. Prior to the anti-social behaviour classification change in April 2011, the key types of police recorded anti-social behaviour in York were: behaviour incidents (2/3) followed by malicious communications (8%) and neighbour nuisance incidents (7%).

3.4. Following the anti-social behaviour classification change in April 2011, the main type of anti-social behaviour are nuisance (65%) followed by personal (25%); and a very small number of environmental (9%) incidents.

3.5. The main hotspot locations for anti-social behaviour within the last twelve months include: Union Terrace; Coney Street and McDonalds on Blake Street.

3.6. The level of criminal damage in 2011/12 is predicted to be 350 cases lower than last year. All types of criminal damage are predicted to fall,

although the largest reductions are predicted to be in criminal damage to dwellings. Apart from December in 2010, September of this year saw the lowest monthly level of criminal damage in the last three years.

3.7. York sits in 8<sup>th</sup> position in its Iquanta family compared to 15<sup>th</sup> position back in February 2011.

3.8. Overall levels of council recorded anti-social behaviour are predicted to rise by around 320 cases (8%) higher. These are due to predicted rises within fly-tipping, litter and to a lesser extent graffiti and drugs related litter.

#### 4. Violent Crime

4.1. Levels of violent crimes in York are predicted to be around 300 crimes lower in 2011-12 than last year. York had 173 recorded cases of violence in September 2011, the lowest month for two years.

4.2. York is currently in 11<sup>th</sup> place within its IQUANTA family for violent crime, and has been in a similar position for the last year even with the predicted reductions in crime

4.3. Levels of violent crime within York's Cumulative Impact Area (City Centre) are comparable to last year with a predicted 500 crimes of violence compared to 525 last year.

4.4. Levels of violent crime at large summer events in York such as race-days have been lower than in previous years.

#### York - Domestic Violence Incidents

##### Totals

###### Target 2013-14

2840

###### Forecast

2160

###### Cumulative

900

###### Target Monthly Total

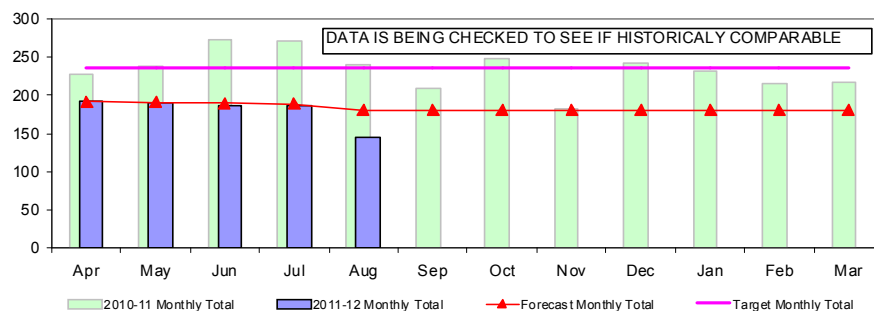
236.7

###### Previous Years

|         |      |
|---------|------|
| 2007-08 | NA   |
| 2008-09 | NA   |
| 2009-10 | 2840 |
| 2010-11 | 2795 |

###### Milestone Targets

|         |      |
|---------|------|
| 2011-12 | 2840 |
| 2012-13 | 2840 |
| 2013-14 | 2840 |



###### The Graph shows:

- 1) Target level 2013-2014 (Strategy end not the Yearly milestones)
- 2) Forecasted annual total based upon a moving average of months (There has been no allowance for known seasonal patterns)

###### Key:

|  |                         |
|--|-------------------------|
|  | - Action Needed (>120%) |
|  | - Caution (100% - 120%) |
|  | - No Action (<100%)     |

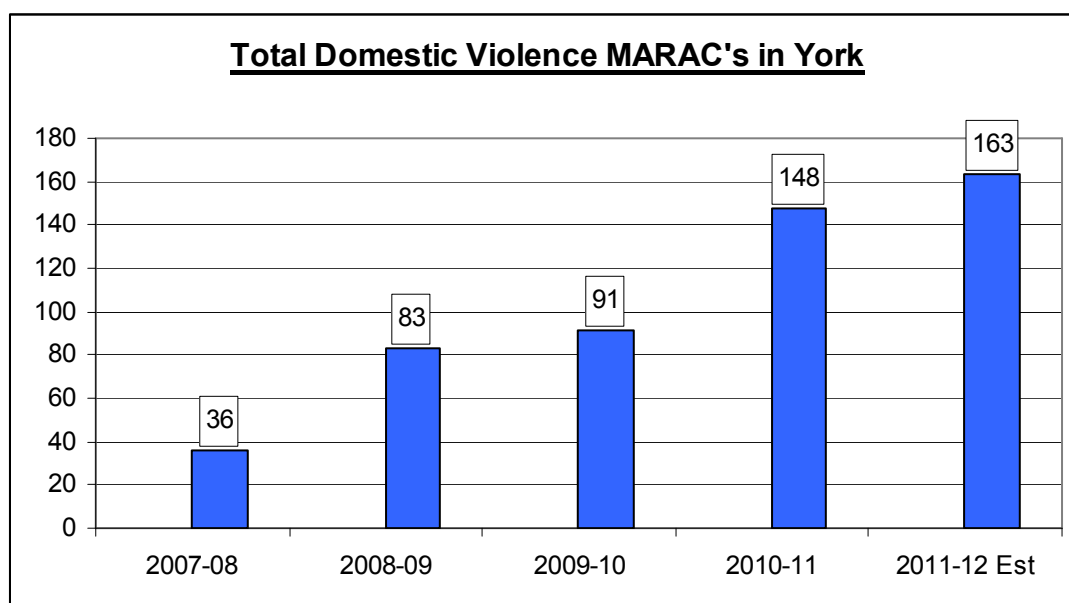


| Month | 2011-12 | 2010-11 | 2009-10 |
|-------|---------|---------|---------|
| Apr   | 192     | 228     | NA      |
| May   | 190     | 237     | NA      |
| Jun   | 187     | 274     | NA      |
| Jul   | 186     | 270     | NA      |
| Aug   | 145     | 240     | NA      |
| Sep   | x       | 208     | NA      |
| Oct   | x       | 248     | NA      |
| Nov   |         | 182     | NA      |
| Dec   |         | 243     | NA      |
| Jan   |         | 232     | NA      |
| Feb   |         | 215     | NA      |
| Mar   |         | 218     | NA      |

- 4.5. Based upon data up to August 2011, it is predicted that there is likely to be 600 less domestic violence incidents in York in 2011/12 than the previous year, indicating a drop of around 20%.
- 4.6. The 600 incidents above will not all translate in to “violent crime reduction” as it is predicted that 33% of all domestic violence incidents will be crimed compared to 25% in 2010/11.
- 4.7. The levels of repeat domestic violence incidents, is predicted to around the same level of 25% of all incidents. The level of incidents where children are recorded as being present is still predicted to be around the 20% mark.
- 4.8. Historically, levels of domestic violence have been shown to match the most deprived area in York under the index of multiple deprivation. This pattern has been repeated in the first five months of 2011/12 with only differences being lower levels of domestic violence in Hull Road and Westfield during August.
- 4.9. There have been 95 Multi-Agency Risk Assessment Conferences (MARAC's) held for domestic violence up to end of October during 2011/12. The percentage of repeat Marac's is expected to be at similar levels to the last two years.

| Indicator   | Type     | 2007/08    | 2008/09 | 2009/10 | 2010/11 | 2011/12     |
|---|----------|------------|---------|---------|---------|-------------|
| NI 32 Repeat Incidents of Domestic Violence Cases reviewed as a MARAC | Target   | 8.3% (Est) | 7%      | 6%      | 5%      | N/a         |
|   | Out-turn | 8.3%       | 10.8%   | 17.6%   | 18.2%   | 17.9% (est) |

- 4.10. The total number of Marac's held in York is predicted to rise for the fourth year in a row since their inception.



- 4.11. No domestic violence murders were recorded during 2010/11 in York.

| Indicator                      | Type     | 2007/08 | 2008/09 | 2009/10 | 2010/11 | 2011/12 |
|--------------------------------|----------|---------|---------|---------|---------|---------|
| NI 34 Domestic Violence Murder | Target   | N/a     | 0       | 0       | 0       | 0       |
|                                | Out-turn |         | 0       | 0       | 0       | 0       |

4.12. Information available from Local Alcohol Profiles for England and Wales suggest that York has lower levels of alcohol related crimes than the national average. Levels of alcohol related crimes have fallen for each of the last five years of available data.

| Indicator                            | Type     | Q1     | Q2     | Q3     | Q4     | 2010/11 |
|--------------------------------------|----------|--------|--------|--------|--------|---------|
| NI39 Alcohol Related Harm Admissions | Target   | 418.75 | 418.75 | 418.75 | 418.75 | 1675    |
|                                      | Out-turn | 369    | 334    | 353    | 361    | 1417    |

| Indicator                            | Type     | 2006/07 | 2007/08 | 2008/09 | 2009/10 | 2010/11 |
|--------------------------------------|----------|---------|---------|---------|---------|---------|
| NI39 Alcohol Related Harm Admissions | Target   | 1270.1  | 1270.1  | 1544    | 1620    | 1675    |
|                                      | Out-turn |         | 1199    | 1405    | 1405    | 1417    |

4.13 Information on people attending York Accident and Emergency department is expected to be transferred to Safer York within the next few weeks.

## 5. Re-offending information

5.1. Data available up to the end of Q4 of 2010/11 suggests the prolific and priority offending indicator has come under the target for 2010/11 set within the previous local area agreement. No data has yet been released for 2011/12.

| Indicator  | Type                 | Q1  | Q2   | Q3  | Q4    | 2010/11 Est |
|--|----------------------|-----|------|-----|-------|-------------|
| NI 30 Re-offending Rate of Prolific and Priority Offenders | Baseline Offences    | 24  | 8    | 23  | 2     | 57          |
|  | Target               | 21  | 7    | 20  | 2     | 50          |
|  | Out-turn             | 3   | 10   | 4   | 4     | 21          |
|  | % Reduction Target   | 13% | 13%  | 13% | 13%   | 13%         |
|  | % Reduction Out-turn | 88% | -25% | 83% | -100% | 63%         |

5.2. Information released on drug-related offending by the Ministry of Justice suggests that the actual rate of drug re-offending in York has been lower than the predicted rate. This has been the case for two out of the previous three years of data availability.

| Indicator                                   | Type               | Q1   | Q2   | Q3   | Q4   | 2010/11 |
|---|--------------------|------|------|------|------|---------|
| NI 38 Drug Related (Class A) Offending Rate | Cohort Size        | 13   | 13   | 13   | 13   | 13      |
|   | Predicted Offences | 15.8 | 14.1 | 12.2 | 10.4 | 52.5    |
|   | Actual Offences    | 13   | 8    | 19   | 12   | 52      |
|   | Ratio Target       | 0.98 | 0.98 | 0.98 | 0.98 | 0.98    |
|   | Ratio Out-turn     | 0.82 | 0.57 | 1.56 | 1.15 | 0.99    |

5.3. Data on proven re-offending by young offenders is now available for the completed 2010/11 year. The level of re-offending has been higher than target in 2010/11.

| Indicator  | Type     | 2007/08     | 2008/09 | 2009/10 | 2010/11 |
|--|----------|-------------|---------|---------|---------|
| NI 19 Rate of Proven re-offending by young Offenders aged 10 to 17 | Target   | 1.91 (2005) | 1.82    | 1.74    | 1.66    |
|  | Out-turn |             | 1.62    | 1.17    | 2.00    |

5.4. Data on first time entrants in to the youth justice system is now available for the completed 2010/11 year, and quarter 1 of 2011/12. This data suggests that the number of first time entrants continues to decline in York year on year.

| Indicator  | Type     | 2007/08 | 2008/09 | 2009/10 | 2010/11 |
|--|----------|---------|---------|---------|---------|
| NI 111 First time entrants to the Youth justice System aged 10 to 17 | Target   | 2350    | 2185    | 2040    | 1900    |
|  | Out-turn |         | 1810    | 1559    | 846     |

| Indicator  | Type     | Q1  | Q2 + | Q3 + | Q4 + |
|--|----------|-----|------|------|------|
| NI 111 First time entrants to the Youth justice System aged 10 to 17 | Target   | 232 | 464  | 696  | 928  |
|  | Out-turn | 207 |      |      |      |

5.5. New information for NI18 Adult-reoffending has been released on Iquanta and this shows that the actual rate of re-offending still continues to be higher than the predicted rate for York.

| Indicator                    | Type       | 2010/11 |        |        |        |
|------------------------------|------------|---------|--------|--------|--------|
|                              |            | Jun-10  | Sep-10 | Dec-10 | Mar-10 |
| NI 18 Adult Reoffending Rate | Predicted  | 12.46%  | 12.62% | 12.50% | 12.55% |
|                              | Actual     | 12.73%  | 12.88% | 12.93% | 13.24% |
|                              | Difference | 2.2%    | 2.1%   | 3.4%   | 5.5%   |

## 6. Business Crime

6.1. Levels of most types of business crime are comparable to last year except shoplifting where it is predicted that there will be 220 fewer crimes of shoplifting than last year.

6.2. Although shoplifting is down within major retailers and within the city centre, it continues to rise in smaller supermarkets / convenience stores within York's suburbs.

6.3. Levels of shoplifting on the three main retail parks on the outskirts of York continues to be low with a predicted 146 crimes at Monk Cross, Clifton Moor and Mcarthur Glen compared in 2011/12 compared to 169 crimes in 2010/11.

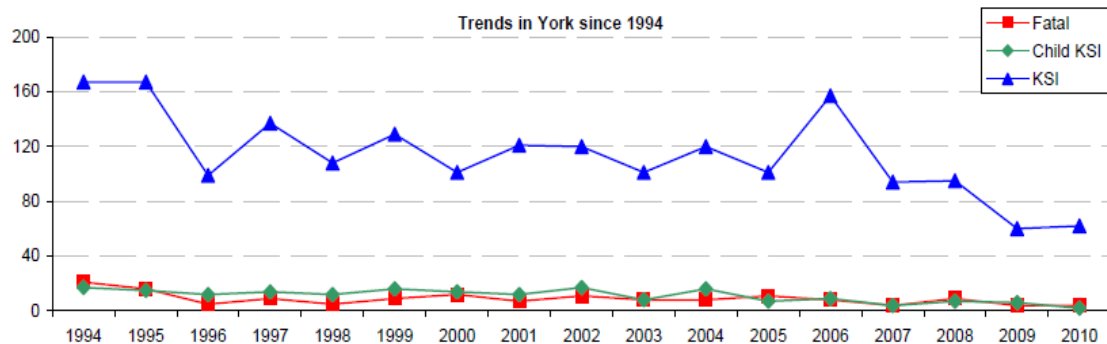


6.4. Out of the 190 premises that are RACY (retailers against crime in York) members, 99 of them did not suffer a shoplifting crime in the first six months of the year.

6.5. 202 different shops suffered a shoplifting crime between April and October of 2011. The twenty two shops with the most volume for shoplifting account for just under half of all the crime (49%)

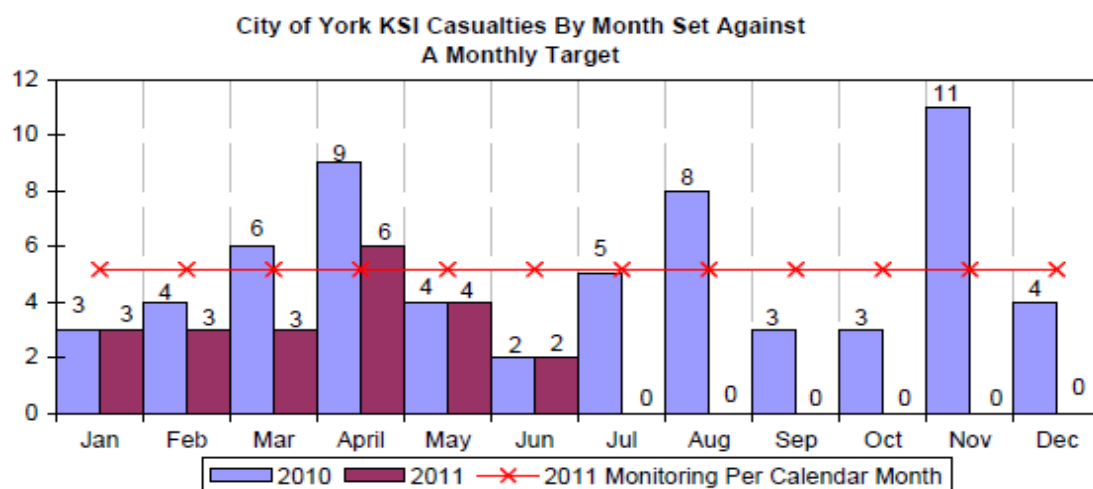
## 7. Other Information

7.1. The number of people killed or seriously injured in road traffic collisions in York continues to decline. Comparing the first six months of 2011 to 2010, the number of incidents has declined by a third (21 compared to 28 for same period last year).



7.2. Of the 21 casualties in York between January and June of 2011:

- 2 of them are fatal injuries
- 19 of them are serious injuries
- 1 of them has been a serious injury to a child (0-15)
- 7 of them have been serious injuries to pedal cyclists



7.3. Levels of hate crime are still stable in York with a predicted change of 4 fewer cases this year. The majority of the hate crime is Racial related,

although there has been a small number of hate crimes which fall in to Religious, Homophobic and Disability categories over the last three years

| Indicator  | Type                | 2003/4 | 2004/5 | 2005/6 | 2006/7 | 2007/8 | 2008/9 | 2009/10 | 2010/11 | 2011/12   |
|------------|---------------------|--------|--------|--------|--------|--------|--------|---------|---------|-----------|
| Hate Crime | Out-turn            | 85     | 104    | 102    | 102    | 68     | 164    | 169     | 152     | 148 (est) |
|            | Direction of Travel |        |        |        |        |        |        |         |         |           |

7.4. Around 25% of all hate crimes are recorded to city centre locations with the other cases being evenly distributed throughout the city. There is little evidence of repeat victimisation for hate crime in York.

7.5. No new studies of lead and scrap theft have been completed within the last two months but previous information suggests:

- There have been 158 cases of metal theft including lead and scrap, within the first five months of the financial year. This compares to 71 cases in the first five months of last year a 105% increase.
- There have been cases of scrap metal thefts within all 22 wards in the city and significant concentrations of cases in the Heworth and Clifton wards. There have only been five locations this year, when more than one crime has occurred.
- The majority of cases (60%) in York of scrap metal theft are where lead has been stolen from windows and roofs of domestic premises at some point during the evening / night, with the property owner not realizing a theft has occurred until the next day. The majority of these crimes are undetected.
- There have also been nine schools and four churches which have suffered from metal theft during this time period.

**Report Written by:**

Ian Cunningham, Senior Analyst, Safer York Partnership